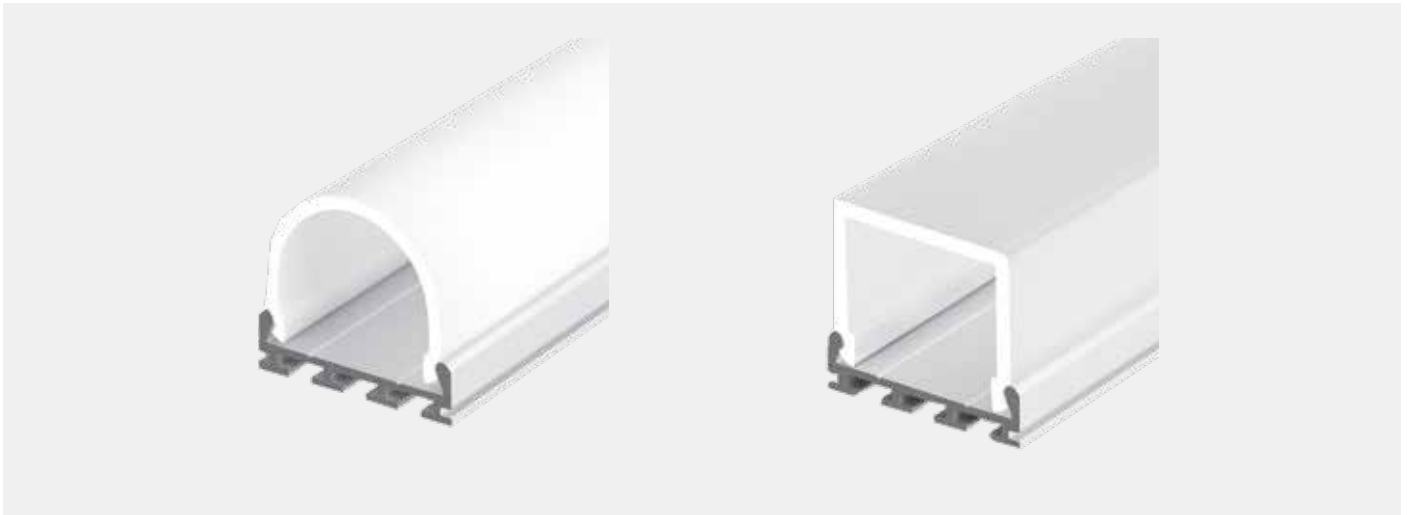


Product family

MICRO-11

Structure profiles made of extruded anodized aluminum, clip-on covers, can be fitted with LED strips, with various covers (round, square) available, mounting and fastening accessories, available per linear meter



CHARACTERISTIC

- Extruded, anodized aluminum profile
- Polycarbonate cover
- suitable for LED strips up to max. 24mm width
- for stripes IP20 / IP44

SPECIAL FEATURE

- suitable for extra wide LED strips



Product view:

Profile:

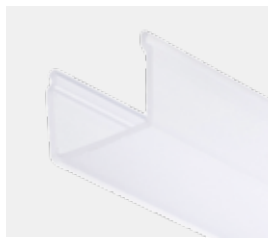


alu profile
PLB4574/1

Covers:



opal/ round
PL00413/1



opal/ square
PL00415/1

Accessories:

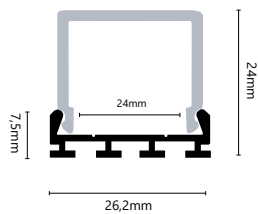
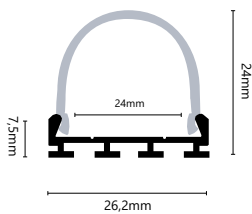


endpiece round (1x)
PL00306



end piece square (1x)
PL00307

Drawings:



Use Stripes:

- for LED Stripes LA-FLEX-05-PREMIUM, LA-FLEX-10-PREMIUM, LA-FLEX-15-PREMIUM, LA-FLEX-20-PREMIUM
- for LED-Stripes LW-FLEX-13-STANDARD, LW-FLEX-21-STANDARD, LW-FLEX-26-STANDARD, LW-FLEX-RGB+W, LW-FLEX-RGB
- for LED-Stripes LW-FLEX-TWOCOLOR, LA-FLEX-Z-05, LA-FLEX-Z-12
- for LED-Stripes LW-FLEX-NANO-05-CC, LW-FLEX-NANO-10-CC, LW-FLEX-NANO-15-CC, LW-FLEX-NANO-RGB-CC IP44
- for LED-Stripes LW-FLEX-13-STANDARD, LW-FLEX-21-STANDARD, LW-FLEX-26-STANDARD, LW-FLEX-RGB+W, LW-FLEX-RGB IP68