

Product family

MICRO-13

Recessed profiles made of extruded anodized aluminum, clip-on covers, available per linear meter, can be equipped with LED strips, available with various covers (opal, clear, flat, high, lens), mounting and fastening accessories



CHARACTERISTIC

- Extruded, anodized aluminum profile
- Polycarbonate cover
- suitable for LED strips up to max. 17mm width
- for stripes IP20 / IP44 / IP65
- available per running meter

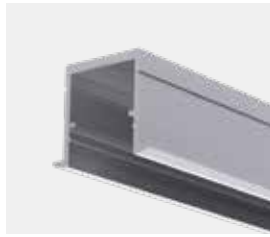
SPECIAL FEATURE

- Profile is also possible with IP68 encapsulation technology



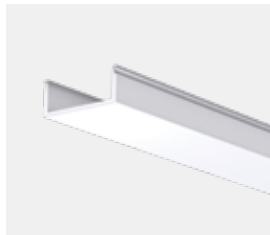
Product view:

Profile:

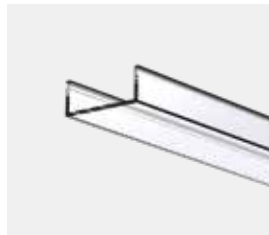


alu profile
N68215

Covers:



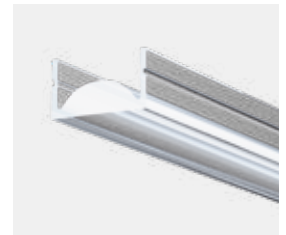
opal/ flat
N68195



clear/ flat
N68196



opal/ high
N68201



lens clear 15°
N68226

Accessories:



end piece grey (1x)
N68220

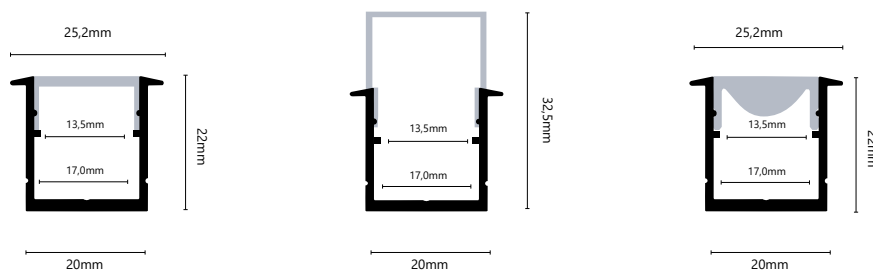


end piece opal/ high (1x)
N68202



bracket set (1x)
N68225

Drawings:



Use Stripes:

- for LED Stripes LA-FLEX-05-PREMIUM, LA-FLEX-10-PREMIUM, LA-FLEX-15-PREMIUM, LA-FLEX-20-PREMIUM
- for LED-Stripes LW-FLEX-13-STANDARD, LW-FLEX-21-STANDARD, LW-FLEX-26-STANDARD, LW-FLEX-RGB+W, LW-FLEX-RGB
- for LED-Stripes LW-FLEX-TWOCOLOR, LA-FLEX-Z-05, LA-FLEX-Z-12
- for LED-Stripes LW-FLEX-NANO-05-CC, LW-FLEX-NANO-10-CC, LW-FLEX-NANO-15-CC, LW-FLEX-NANO-RGB-CC IP44
- for LED-Stripes LW-FLEX-13-STANDARD, LW-FLEX-21-STANDARD, LW-FLEX-26-STANDARD, LW-FLEX-RGB+W, LW-FLEX-RGB IP68