

Product family

MAL 10

Installation on the floor with protection class IP67 Wallwasher, extra hardened glass, ATEX cable bushing, neoprene cable IK impact resistance level IK09 up to 10 joules, excluding casting housing (must be ordered separately), excluding converter (not dimmable) must be ordered separately



ADVANTAGES

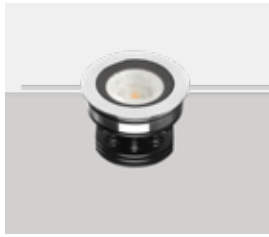
- In-ground luminaire IP67
- excl. converter (not dimmable) must be ordered separately

CHARACTERISTIC

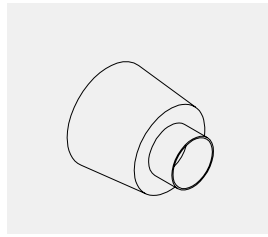
- In-ground luminaire with extra hardened glass
- IK impact resistance level IK09 up to 10 joules
- 4 selectable housing colors
- Degree of protection IP67
- Other light colors and beam angles on request.

Product overview:

Types:



MAL 10



casting surround for MAL 10
(optional)

Light emission:



direct

Housing color:



grey



black



copper

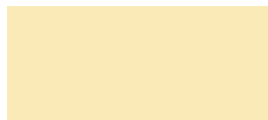


steel AISI 316L

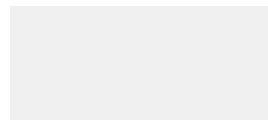
Light color:



2700K superwarm white

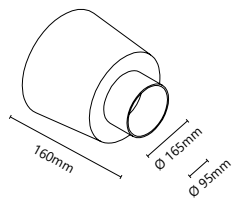
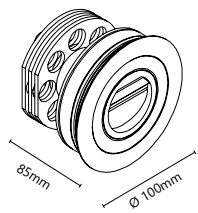


3000K warm white



4000K neutral white
(on request)

Drawings:



Installation depth 85mm

Article overview:

item numer	types	① angle	② kelvin	③ color
FL-MA1 ①②③	MAL 10 LED 10W 250mA	» 1 « WW	» 0 « 2700K » 1 « 3000K	» G « grey » N « black » K « copper » Z « steel AISI 316L
FL-CSDS20	Eingießgehäuse für MAL 10			

Technical information:

MAL 10

Total watt:	10W	
Net lumen:	890lm	1000lm
Kelvin (CCT):	2700K	3000K
Angle:	Wallwasher	
CRI:	>85Ra	
Light emission:	direct	
Protection:	IP67	
Life expectancy:	50.000h	
Voltage:	100~230V AC/ 250mA DC	